



## SPRING 2026 PRODUCT CAPTIONS

### The Baker Originals Collection

Baker Originals Upholstery is defined by sculptural forms that channel mid-century and vintage sensibilities, with silhouettes attributed to Danish, French, Belgian, and American influences. Materials in pine, oak, walnut, and warm metal accents add depth and character throughout the collection. The assortment balances approachability with a sense of ease, spanning from delicate accent chairs to grand wing chairs, generously scaled sofas, and tailored settees. Every detail is intentional, with carved feet, precise welt placement, optional slipcovers, and engineered lumbar comfort to deliver beauty with purpose.



BAA6600C, Morris Lounge Chair

The Morris Lounge Chair feels artistic and architectural—especially in its angular arms, which slope dramatically from back to front. This upholstered chair is framed with walnut solids, creating crisp lines and a sense of materiality throughout.

Optional Finishes: Finish Program (Tier 1, Tier 2, Tier 3 and Tier 4)



BAA6601C, Oslo Lounge Chair

The Oslo Lounge Chair distills a sculptural essence into a compact, tailored form. The chair features a circular motif with smooth, flowing lines throughout.



BAA6602C, Bruges Lounge Chair

With softly curving arms and an organic, relaxed form, the Bruges Lounge Chair offers a welcoming presence in any living space. A loose pillow back adds comfort and softness, while tapered oak legs give the chair a light, elevated stance.

Optional Finishes: Finish Program (Tier 1, Tier 2, Tier 3 and Tier 4)





#### BAA6603C, Anders Lounge Chair

Architectural and crisply designed, the Anders Lounge Chair merges well-defined shaping with tall and slender walnut legs for an airy appearance. The fitted bolster on the inside of the arms infuses a soft, refined detail to the chair.

Optional Finishes: Finish Program (Tier 1, Tier 2, Tier 3 and Tier 4)



#### BAA6604C, Sussex Lounge Chair

The Sussex Lounge Chair offers the timeless style of the past and the ease of modern design. The silhouette rests atop tall pine legs with stretchers, while gently softened arms offer endless comfort.

Optional Finishes: Finish Program (Tier 1, Tier 2, Tier 3 and Tier 4)



#### BAA6605C-LS, Left Bank Lounge Chair - Loose Back

Clean and well proportioned, the Left Bank Lounge Chair reflects iconic midcentury design with its track arms and distinctive “T” back. A carved oak foot grounds the silhouette with a subtle note of craftsmanship, adding refinement from every angle. The chair is offered in a choice of back options: select the loose back for a softer, more relaxed bearing.

Optional Finishes: Finish Program (Tier 1, Tier 2, Tier 3 and Tier 4)



#### BAA6605C, Left Bank Lounge Chair - Tight Back

Clean and well proportioned, the Left Bank Lounge Chair reflects iconic midcentury design with its track arms and distinctive “T” back. A carved oak foot grounds the silhouette with a subtle note of craftsmanship, adding refinement from every angle. The chair is offered in a choice of back options: select the tight back for a minimalist look or the loose back for a softer, more relaxed bearing.

Optional Finishes: Finish Program (Tier 1, Tier 2, Tier 3 and Tier 4)





#### BAA6606C, Laesing Lounge Chair

Designed for reading and moments of quiet contemplation, the Laesing Lounge Chair offers sculptural shaping and generous proportions. Soft rounded arms and a dish-shaped back subtly cradle the body with an inviting form.

Optional Finishes: Finish Program (Tier 1, Tier 2, Tier 3 and Tier 4)



#### BAA6608C, Thames Lounge Chair

Inspired by the classic English-style lounge chair, the Thames Lounge Chair incorporates the trademark elements of timeless seating design. The chair features an arched back, a thin deck allowing for long slender legs, solid oak legs and Lawson roll arms that deliver ultimate elegance.

Optional Finishes: Finish Program (Tier 1, Tier 2, Tier 3 and Tier 4) with French Brass Accents



#### BAA6610C, Ella Lounge Chair

Elegant and sculptural, the Ella Lounge Chair shows off its midcentury influence in clean lines, a deeply curved back and gently falling track arms. The chair is thoughtfully finished with tapered oak legs and brass sabots.

Optional Finishes: Finish Program (Tier 1, Tier 2, Tier 3 and Tier 4)



#### BAA6611C, Brussels Lounge Chair

Strongly defined, yet undulating, the Brussels Lounge Chair is a study in how structured design and modern comfort can coalesce in one iconic piece. Offered with an optional slipcover, the chair can easily transition between formal and relaxed looks.

Optional Finishes: Finish Program (Tier 1, Tier 2, Tier 3 and Tier 4)





#### BAA6612C, Ines Lounge Chair

The Ines Lounge Chair experiments with gentle detailing on a classic midcentury form. Its arms flow into an arched back, while a solid oak base with saber legs and rounded rails adds elegance and intrigue.

Optional Finishes: Finish Program (Tier 1, Tier 2, Tier 3 and Tier 4)



#### BAA6613C, Oxford Lounge Chair

The Oxford Lounge Chair features a well-crafted solid oak frame with subtle detailing and a proud base that highlights its architectural presence. The slatted back and exposed solid oak frame introduce a refined sense of structure, creating a balanced expression of comfort and craftsmanship.

Optional Finishes: Finish Program (Tier 1, Tier 2, Tier 3 and Tier 4)



#### BAA6614C, Mouton Lounge Chair

An artful merging of metal and fabric, the Mouton Lounge Chair is modern, textured and generously scaled. Its supportive back cushions and robust rounded seat provide a contrast to the chair's metal frame.

Standard Finish: French Brass



#### BAA6615C, Kensington Lounge Chair

Taking its cues from midcentury design, the Kensington Lounge Chair is defined by flowing wood that curves from the front through the arm and wraps around the back. Its curved and arched solid walnut frame creates a graceful, cohesive look.

Optional Finishes: Finish Program (Tier 1, Tier 2, Tier 3 and Tier 4)





#### BAA6616C, Vida Lounge Chair

Small in scale, yet rich in form, the Vida Lounge Chair features track arms that sweep gently outward and around the frame atop solid oak legs. The chair's concave front and arched back create an inviting, sculptural outline that pairs comfort with modern elegance.

Optional Finishes: Finish Program (Tier 1, Tier 2, Tier 3 and Tier 4)



#### BAA6617C, Manchester Swivel Lounge Chair

The Manchester Swivel Lounge Chair cuts a dashing figure in any space, pairing deeply tufted upholstery with a sloping, arched silhouette. This highly sophisticated tub chair includes a swivel base in quartered oak that enhances its comfort and utility.

Optional Finishes: Finish Program (Tier 1, Tier 2, Tier 3 and Tier 4)



#### BAA6618C, Ari Arm Chair

The Ari Arm Chair has the soul of a midcentury piece, featuring graceful curves and refined proportions. The arms seamlessly flow into the back in a smooth continuous line, while long round tapered oak legs create an airy appearance. Its versatile design allows for use as an accent chair or an elevated dining chair.

Optional Finishes: Finish Program (Tier 1, Tier 2, Tier 3 and Tier 4)



#### BAA6619C, Niles Lounge Chair

The Niles Lounge Chair reflects a refined, transitional piece that features a softly curved silhouette and an exposed wire pine frame that highlights the natural grain and artisanal texture of the wood. The tailored and architectural profile of the tight seat and back lend a clean, sophisticated presence with timeless versatility.

Optional Finishes: Finish Program (Tier 1, Tier 2, Tier 3 and Tier 4)





BAA6607L, Ronde Settee

The Ronde Settee is defined by an elegant curved form that softens its overall silhouette. Narrow track arms follow the arc of the frame for a modern profile, while slender solid oak legs lift the piece, adding lightness and refinement.

Optional Finishes: Finish Program (Tier 1, Tier 2, Tier 3 and Tier 4)



BAA6603L, Anders Loveseat

The Anders Loveseat is refined, tailored and architectural, designed for visual interest and innate comfort. Its gently rising arms and tall slender walnut legs add a stylish, airy inclination to this structurally-inspired piece.

Optional Finishes: Finish Program (Tier 1, Tier 2, Tier 3 and Tier 4)



BAA6600S, Morris Sofa

The Morris Sofa boasts a sleek, contemporary silhouette defined by crisp lines and an architectural motif. Framed with walnut solids, the design offers a striking contrast to the upholstery while angular arms lend a tailored, modern presence.

Optional Finishes: Finish Program (Tier 1, Tier 2, Tier 3 and Tier 4)



BAA6601S, Oslo Sofa

With sculptural, smooth lines and a circular motif, the Oslo Sofa offers a fluid and free-flowing spirit. The tight seat and back finish the design with a clean and tailored appearance.





#### BAA6602S, Bruges Sofa

Each element of the Bruges Sofa is carefully considered in its shaping: the soft, contoured lines of the arms meet loose knife-edge pillow backs, all standing atop trim and tapered oak legs. This airy, approachable piece creates a relaxed look with plush comfort and visual softness.

Optional Finishes: Finish Program (Tier 1, Tier 2, Tier 3 and Tier 4)



#### BAA6603S, Anders Sofa

The Anders Sofa is refined, tailored and architectural, designed for visual interest and innate comfort. Its gently rising arms and tall slender walnut legs add a stylish, airy inclination to this structurally-inspired piece.

Optional Finishes: Finish Program (Tier 1, Tier 2, Tier 3 and Tier 4)



#### BAA6604S-85, Sussex Sofa-85

Timeless in its silhouette and design sensibilities, the Sussex Sofa offers both classic style and modern comfort. Its tall pine legs provide an airy appearance, while the gently softened arms provide a welcoming embrace for hours of lounging and conversation.

Optional Finishes: Finish Program (Tier 1, Tier 2, Tier 3 and Tier 4)



#### BAA6604S-104, Sussex Sofa-104

Timeless in its silhouette and design sensibilities, the Sussex Sofa offers both classic style and modern comfort. Its tall pine legs provide an airy appearance, while the gently softened arms provide a welcoming embrace for hours of lounging and conversation.

Optional Finishes: Finish Program (Tier 1, Tier 2, Tier 3 and Tier 4)





BAA6605S-LS, Left Bank Sofa - Loose Back

The Left Bank Sofa draws from midcentury design with its clean proportions, track arms, and distinctive “T” back. A carved oak foot grounds the silhouette with a subtle note of craftsmanship, adding refinement from every angle. Offered in two back options, the tight back delivers a sleek, minimalist look, while the loose back introduces a softer, more relaxed sensibility.

Optional Finishes: Finish Program (Tier 1, Tier 2, Tier 3 and Tier 4)



BAA6605S, Left Bank Sofa - Tight Back

The Left Bank Sofa draws from midcentury design with its clean proportions, track arms, and distinctive “T” back. A carved oak foot grounds the silhouette with a subtle note of craftsmanship, adding refinement from every angle. Offered in two back options, the tight back delivers a sleek, minimalist look, while the loose back introduces a softer, more relaxed sensibility.

Optional Finishes: Finish Program (Tier 1, Tier 2, Tier 3 and Tier 4)



BAA6605S, Left Bank Ottoman

The Left Bank Ottoman reflects the collection’s mid-century influence with clean proportions and a tailored silhouette. Designed to pair seamlessly with Left Bank seating, it offers versatile function while maintaining a refined and elegant sensibility.

Optional Finishes: Finish Program (Tier 1, Tier 2, Tier 3 and Tier 4)



BAA6606O, Laesing Ottoman

The softly sculpted Laesing Ottoman is a celebration of simplicity, complementing nearly any interior with its low-profile silhouette resting atop solid oak legs.

Optional Finishes: Finish Program (Tier 1, Tier 2, Tier 3 and Tier 4)





**BAA6620B, Sovereign Bench**

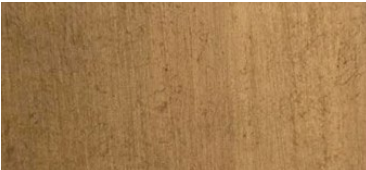
The Sovereign Bench is reminiscent of the cast bamboo furniture seen at the Royal Brighton Pavilion, a coastal palace built for British royals in the early 1800s. The bench pairs a tight seat with sculptural metal bamboo legs in French Brass finish.

Standard Finish: French Brass

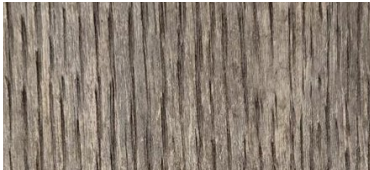
Finishes and Materials:



Brownstone



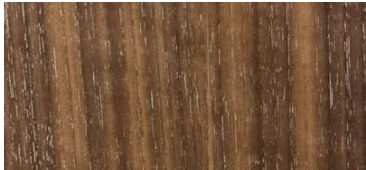
French Brass



Nutmeg



Porcini



Soren